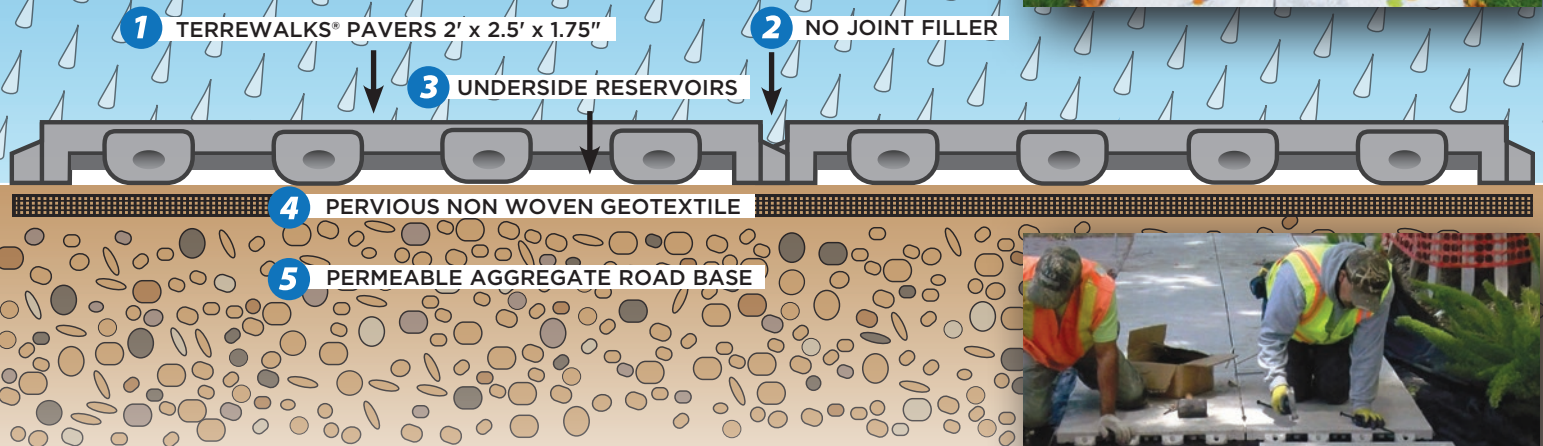


TERREWALKS®

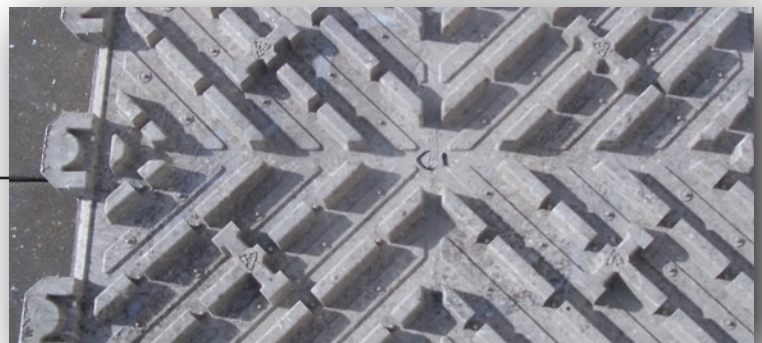
- Modular, interlocking paving system made of 100% recycled plastic
- High capacity storm water flow and filtration



- 1 TERREWALKS® directs stormwater to the joints and flows at a rate of 420 in/hr.
- 2 Interlocking tabs with no joint filler so that water is free to flow between units instead of through material. Unlike PICPs no edge restraints needed.
- 3 Underside channels serve as reservoirs which hold $\frac{3}{4}$ " / 2.3 gallons of stormwater per paver. Prevents overflow and run-off.
- 4 Non woven pervious geotextile fabric enhances water quality through filtration, while providing structural stability.
- 5 Permeable aggregate road base – less volume required than for PICPs – further filters and percolates storm water.



Conforms to all storm water management techniques and protocols



TERRECON, Inc. Ph 714 964 1400 • Fax 714 964 8600
10061 Talbert Ave. #200, Fountain Valley, CA 92708
E-mail: info@terrecon.com • Web: www.terrecon.com

TERRECON™

© 2013 TERRECON, Inc.



TERREWALKS®

TERREWALKS® patented paving system is the superior choice for:

- Installed cost less than PICPs on *day one*
- Unimpeded stormwater flow
- Improved water quality and groundwater recharge
- No surface or joint cleaning
- Unbreakable
- ADA compliance
- Ease of handling and installation
- Not susceptible to the effects of freeze thaw cycles



INFILTRATION

An infiltration rate of 420 in/hr (ASTM C 1701) means TERREWALKS® receives more water flow than other pervious systems, and exceeds typical rain fall quantities even in the wettest climates.

WATER STORAGE

TERREWALKS® built-in reservoirs store 2.3 gallons of water per paver so water will slowly percolate through the base layer into native soil below. Due to saturation, or slow absorption of native soils, flow without storage results in run off—even if pavement has infiltration. TERREWALKS® hold overflow and prevent storm water run off.

FILTERING

Sediment and silt is filtered by non woven pervious geotextile, and permeable aggregate base, which recharges local groundwater.

NON CLOGGING

Unlike PICPs and pervious concrete which require periodic cleaning and vacuuming, TERREWALKS® seams are open and smooth, allowing debris and sediment to flow through or naturally wash out.

ADA

TERREWALKS® comply with ADA design guidelines by providing a firm, stable and slip resistant walking surface, with seams not exceeding ½ inch.

Dimensions: 24" x 30"
(or 2' x 2 ½') / 5 sq. ft.

Thickness: 1.75"

Weight: 25 lbs.

ASTM C1701 Infiltration:
420"/hr.

Percentage Open Space: 20%

Run-off Coefficient: 0

Percentage void base: 75%.

Percentage void
entire paver: 43%