



VERLAYO®

Problem: Desire for overlay safety surfacing that has more durability, comfort and style than available rubber materials.

Solution: VERLAYO®

Attribute	VERLAYO®	Typical rubber flooring
Hardness (Shore A)	72 +/- 5 points Means firm, not spongy; Dense surface does not absorb stains or moisture.	~60 +/- 5 points Considered recreational, suitable only for flat shoes; not built for durability.
Thickness	Ranging from .75" to 1.5" Height allows installation atop existing hardscape while providing maximum safety, comfort and long term performance.	Less than .5" Minimum shock absorption atop existing hardscape; profiles imperfections in existing surface.
Recycled content	100% recycled rubber (Greater contribution towards LEED credits)	Varies; some less than 80% recycled
Appearance	Dense surface texture; 'Industrial Chic'; choice of standard & custom colors	Open pore surface texture; readily identified as sports and patio surfacing; often black only, with color specs.

TERRECON, Inc.

10061 Talbert Avenue, #200, Fountain Valley, CA 92708

PH 714-964-1400 FAX 714-964-8600 info@terrecon.com www.terrecon.com

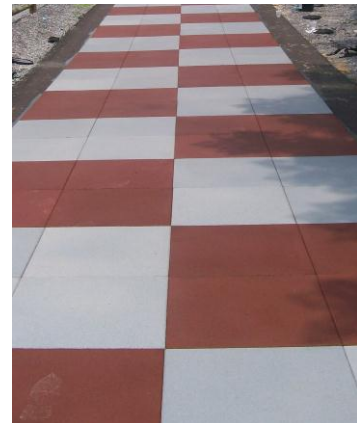


VERLAYO®

The density, durability and safety of Rubbersidewalks™ in a slimmer 100% recycled rubber 24" x 24" or 24" x 30" tile. Heights range from .75" to 1.5". **VERLAYO®** is ideal for installation atop existing flooring or pavement to provide comfort and safety, or to restore old surfaces with a clean and modern appearance. Nothing breaks on **VERLAYO®**—and it provides sound muffling benefits. Practical, decorative, versatile... **VERLAYO®**

- Restaurants
- Courtyards
- Waiting areas such as transit stations, hotel entrances, and queue lines
- Senior Facilities
- Hospitality
- Health Care Facilities
- Museums
- Departments and Boutiques with breakable wares
- Art Galleries
- Music Production and Video Editing Studios
- Stair treads
- ADA ramp resurfacing
- Hide damaged or unsightly flooring
- Cover up cracked and damaged concrete sidewalk
- Bring industrial chic to any space, indoors or out
-

VERLAYO® at the Hammer Café by Wolfgang Puck, at the Hammer Museum, University of California, Los Angeles; and at Riverfront Park, Montgomery, Alabama.



TERRECON, Inc.

10061 Talbert Avenue, #200, Fountain Valley, CA 92708

PH 714-964-1400 FAX 714-964-8600 info@terrecon.com www.terrecon.com